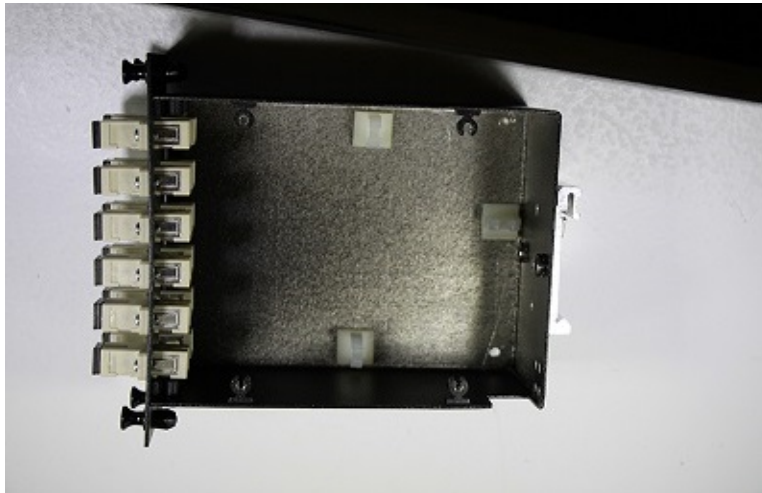


Multimount LGX Patch Panel Loading Instructions

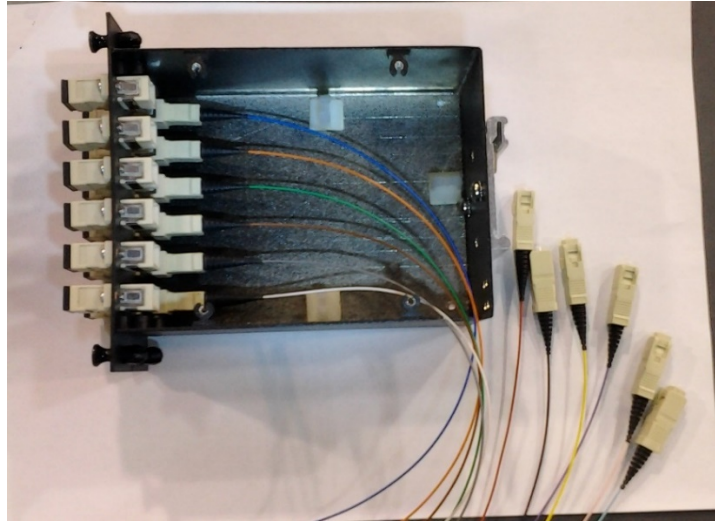
1. Unit arrives with lid held on with 4 small Phillips head screws. Remove these screws and retain.



2. Remove lid and observe notch (lower right in this photo) for cable entry. Orient the Multimount LGX patch panel module so that the fiber cable enters without twisting or kinking and so that the DIN clip is positioned toward the DIN rail.



3. Separate and organize the fibers in color order. You may want to use the fiber management rings at this point. Fibers are shown out of rings for clarity. Plug connectors into mating sleeves starting in position 1 which is the far left, upper mating sleeve, this will be the blue fiber. Continue down the panel, then start with fiber #7 (red) at the top of the near panel continuing down the panel until all fibers are used.



4. Once the panels are populated, manage the fibers into the rings and secure cable jacket with two zip ties. Photo is shown without black shrink for clarity of zip tie positioning. Do not zip tie onto the 900um fibers. Replace cover and screws.

