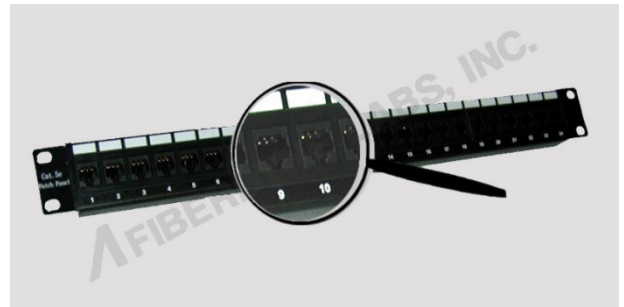


Category 5E Panel

Features:

- - Enhanced Category 5 Patch Panel
- - High Performance
- - IDC Terminal Block for 110 and Krone
- - 19" Patch Panel, 1U Size
- - Accepts 22-26 AWG. Solid or Stranded Wire
- - Supports T568A/B Wiring Guidelines
- - Meets ISO/IEC 11801



Ordering Information:

Fixed Cat 5e Patch Panel (Traditional)

Part Number	Description
F5E1211001	12 Port Cat 5e Patch Panel 110 A/B
F5E2411001	24 Port Cat 5e Patch Panel 110 A/B
F5E4811001	48 Port Cat 5e Patch Panel 110 A/B