

Introduction:

The Fiberdyne 1U High Distribution Center holds 2 panels.
Port / Fiber Count from 6 to 12 per panel.
Reversible Bracket for 19 & 23 inch rackmount.

Features:

- Multiple connector panel configurations available
- Two panels per Fiberdyne Distribution Center
- Port/fiber counts from 6 to 12 per panel
- Connector styles include SC, FC, ST, LC and MT-RJ
- Includes slots for tie downs
- Reversible Bracket for 19 & 23 inch rackmount
- Slide out drawer for easy cable management
- Dimensions: 17" wide x 12" deep x 1.75 inches high
- Accepts FST Reduced Tray or 12PTSPLTR Tray

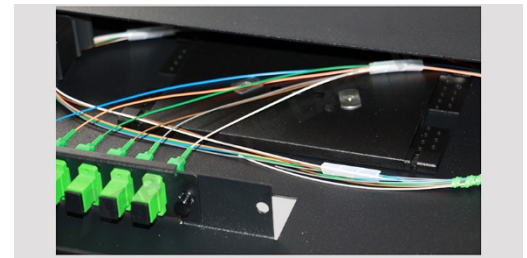
Specifications:

[Isometric View: Fiberdyne Distribution Center \(1U FDC\)](#)

[Termination Box Part Number Build Matrix](#)



1U High Rack Mount Distribution Center



Close-up of Splice Tray

SC/UPC SM 900um-Pigtail

Part Number	Description
FB441A161303M	(1) RTP-1UH, Fiberdyne 1U High Rack Mount, Accepts 2 Panels (2) FPA6SCU, Fiberdyne SC/UPC Panel, Pre-loaded with 6 Simplex SM Adapters (1) 12SPTSPLTR, 12 Capacity Fusion Splice Tray, Reduced (1) F9G81A1GC6003M-900, 12F SM Riser Pigtail, SC/UPC, 900um Breakout, 3 Meters

SC/APC SM 900um-Pigtail

Part Number	Description
FB441A1B1303M	(1) RTP-1UH, Fiberdyne 1U High Rack Mount, Accepts 2 Panels (2) FPA6SCA, Fiberdyne SC/APC Panel, Pre-loaded with 6 Simplex SM Adapters (1) 12SPTSPLTR, 12 Capacity Fusion Splice Tray, Reduced (1) F9G81A1GCB003M-900, 12F SM Riser Pigtail, SC/APC, 900um Breakout, 3 Meters

FC/UPC SM 900um-Pigtail

Part Number	Description
FB441A171303M	(1) RTP-1UH, Fiberdyne 1U High Rack Mount, Accepts 2 Panels (2) FPA6FCU, Fiberdyne FC/UPC Panel, Pre-loaded with 6 Simplex SM Adapters (1) 12SPTSPLTR, 12 Capacity Fusion Splice Tray, Reduced (1) F9G81A1GC7003M-900, 12F SM Riser Pigtail, FC/UPC, 900um Breakout, 3 Meters

FC/APC SM 900um-Pigtail

Part Number	Description
FB441A1A1303M	(1) RTP-1UH, Fiberdyne 1U High Rack Mount, Accepts 2 Panels (2) FPA6FCA, Fiberdyne FC/APC Panel, Pre-loaded with 6 Simplex SM Adapters (1) 12SPTSPLTR, 12 Capacity Fusion Splice Tray, Reduced (1) F9G81A1GCA003M-900, 12F SM Riser Pigtail, FC/APC, 900um Breakout, 3 Meters

ST/UPC SM 900um-Pigtail

Part Number	Description
FB441A111303M	(1) RTP-1UH, Fiberdyne 1U High Rack Mount, Accepts 2 Panels (2) FPA6STU, Fiberdyne ST/UPC Panel, Pre-loaded with 6 Simplex SM Adapters (1) 12SPTSPLTR, 12 Capacity Fusion Splice Tray, Reduced (1) F9G81A1GC1003M-900, 12F SM Riser Pigtail, ST/UPC, 900um Breakout, 3 Meters

LC/UPC SM 900um-Pigtail

Part Number	Description
FB441A1C1303M	(1) RTP-1UH, Fiberdyne 1U High Rack Mount, Accepts 2 Panels (1) FPA12LCS, Fiberdyne LC/UPC Panel, Pre-loaded with 6 Duplex SM Adapters (1) 12SPTSPLTR, 12 Capacity Fusion Splice Tray, Reduced (1) F9G81A1GCL003M-900, 12F SM Riser Pigtail, LC/UPC, 900um Breakout, 3 Meters

LC/APC SM 900um-Pigtail

Part Number	Description
FB441A1N1303M	(1) RTP-1UH, Fiberdyne 1U High Rack Mount, Accepts 2 Panels (1) FPA12LCA, Fiberdyne LC/APC Panel, Pre-loaded with 6 Duplex SM Adapters (1) 12SPTSPLTR, 12 Capacity Fusion Splice Tray, Reduced (1) F9G81A1GCN003M-900, 12F SM Riser Pigtail, LC/APC, 900um Breakout, 3 Meters

MTRJ SM 3mm-Pigtail

Part Number	Description
FB441A1M1303M	(1) RTP-1UH, Fiberdyne 1U High Rack Mount, Accepts 2 Panels (1) FPA12MJS, Fiberdyne MTRJ Panel, Pre-loaded with 6 Duplex SM Adapters (1) 12SPTSPLTR, 12 Capacity Fusion Splice Tray, Reduced (1) F9G81A1GCM003M-3mm, 12F SM Riser Pigtail, MTRJ, 3mm Breakout, 3 Meters

With SC MM Connectors

Part Number	Description
FB441Q161303M	(1) RTP-1UH, Fiberdyne 1U High Rack Mount, Accepts 2 Panels (2) FPA6SCQ, Fiberdyne SC Panel, Pre-Loaded with 6 Simplex MM Aqua Adapters (1) 12SPTSPLTR, 12 Capacity Fusion Splice Tray, Reduced (1) F9G81Q1GC6003M-900, 12F MM 50um OM3 Riser Pigtail, SC, 900um Breakout, 3 Meters

With LC MM Connectors

Part Number	Description
FB441Q1C1303M	(1) RTP-1UH, Fiberdyne 1U High Rack Mount, Accepts 2 Panels (1) FPA12LCQ, Fiberdyne SC Panel, Pre-Loaded with 6 Simplex MM Aqua Adapters (1) 12SPTSPLTR, 12 Capacity Fusion Splice Tray, Reduced (1) F9G81Q1GCL003M-900, 12F MM 50um OM3 Riser Pigtail, SC, 900um Breakout, 3 Meters

SC MM 900um-Pigtail

Part Number	Description
FB441B261303M	(1) RTP-1UH, Fiberdyne 1U High Rack Mount, Accepts 2 Panels (2) FPA6SCM, Fiberdyne SC Panel, Pre-loaded with 6 Simplex MM Adapters (1) 12SPTSPLTR, 12 Capacity Fusion Splice Tray, Reduced (1) F9G81B2GC6003M-900, 12F MM Riser Pigtail, SC, 900um Breakout, 3 Meters

ST MM 900um-Pigtail

Part Number	Description
FB441B211303M	(1) RTP-1UH, Fiberdyne 1U High Rack Mount, Accepts 2 Panels (2) FPA6STM, Fiberdyne ST Panel, Pre-loaded with 6 Simplex MM Adapters (1) 12SPTSPLTR, 12 Capacity Fusion Splice Tray, Reduced (1) F9G81B2GC1003M-900, 12F MM Riser Pigtail, ST, 900um Breakout, 3 Meters

LC MM 900um-Pigtail

Part Number	Description
FB441B2C1303M	(1) RTP-1UH, Fiberdyne 1U High Rack Mount, Accepts 2 Panels (1) FPA12LCM, Fiberdyne LC Panel, Pre-loaded with 6 Duplex MM Adapters (1) 12SPTSPLTR, 12 Capacity Fusion Splice Tray, Reduced (1) F9G81B2GC1003M-900, 12F MM Riser Pigtail, LC, 900um Breakout, 3 Meters

MTRJ MM 3mm-Pigtail

Part Number	Description
FB441B2M1303M	(1) RTP-1UH, Fiberdyne 1U High Rack Mount, Accepts 2 Panels (1) FPA12MJM, Fiberdyne MTRJ Panel, Pre-loaded with 6 Duplex MM Adapters (1) 12SPTSPLTR, 12 Capacity Fusion Splice Tray, Reduced (1) F9G81B2GCM003M-3mm, 12F MM Riser Pigtail, MTRJ, 3mm Breakout, 3 Meters