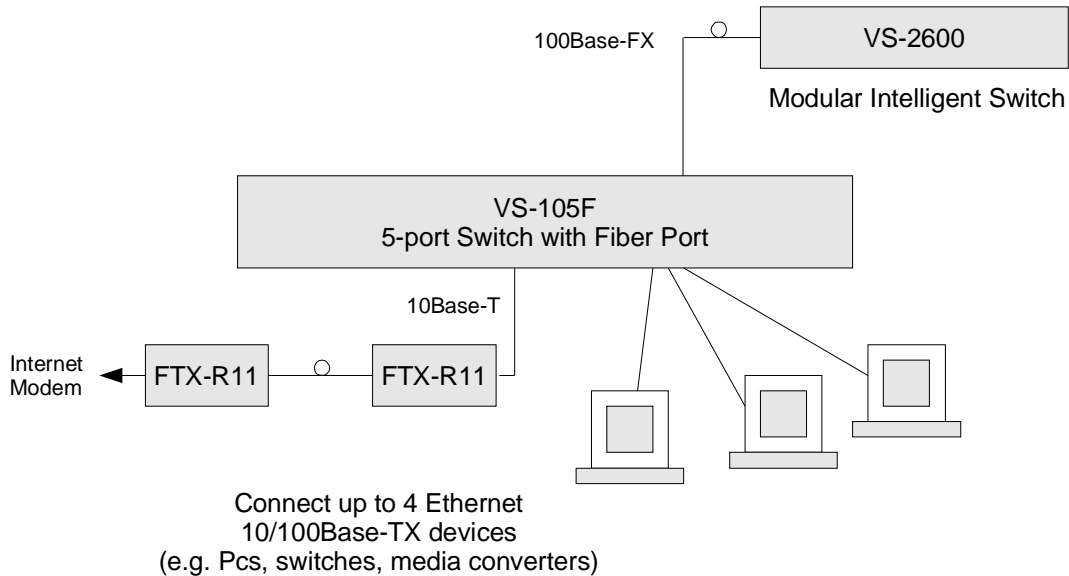


Purpose:

To describe Fiberdyne's 5-port Switch, which includes four 10/100Base-TX ports and one 100Base-FX port. This switch includes Auto-MDI/MDIX on the 10/100Base-TX ports.

Conceptual Usage:



This switch offers four 10/100Base-TX ports plus one 100Base-FX port.

Standard Configuration:

- Compact size with data and power connections on the rear
- Four RJ-45 connections with Auto MDI/MDI-X, for 10/100Base-TX ports
- One 100Base-FX (fiber) connection with Full/Half-duplex selector switch

Options: (see Ordering Information for part numbers)

- 100Base-FX port can be multimode SC, ST, MT-RJ or LC
- 100Base-FX port can be single-mode SC

Features:

- Complies with IEEE 802.3 (Ethernet/Fast Ethernet)
- 10/100Base-TX ports are auto-sensing, auto-negotiation and Auto MDI-X
- Multimode or single-mode fiber connections
- Uses flow control to prevent packet loss
- Store and forward switching; full wire-speed forwarding/filtering
- Learns/stores MAC address entries
- Status LEDs: Power, Link/Speed/Activity and Duplex/Collision

**5-port Switch with Fiber Port
10/100Base Ethernet**

**Fiberdyne Labs, Inc.
Product Specification**

Specifications:

Item Description	Value
Standard Compliance	IEEE 802.3, IEEE 802.3u, IEEE 802.3x (flow control)
TX Ports	Shielded RJ-45 Auto MDI/MDI-X Auto-negotiation: 10/100Base, Full/Half Duplex Maximum cable length: 100 meters
FX Port	Fixed 100Base operation Switch Selectable Full/Half-Duplex Transmitted wavelength: 1300 nm Multimode (62.5/125 or 50/125 μ m): <ul style="list-style-type: none"> - Maximum Distance: 2 km - Transmit Power: -20 to -14 dBm - Receiver sensitivity: -31 dBm Single-mode: 20 km <ul style="list-style-type: none"> - Transmit Power: -15 to -8 dBm - Receiver sensitivity: -31 dBm Single-mode: 40 km <ul style="list-style-type: none"> - Transmit Power: -9 dBm (min.) - Receiver sensitivity: -35 dBm
MAC Address	1k entries
Filtering/Forwarding	Rate: 14,880 pps (10Base-T), 148,800 pps (100Base) Multicast/Broadcast/Unicast address
Temperature – Operating *	0 to 40 °C
* Humidity (non-condensing)	10 to 90 %
Dimensions	144 mm x 105 mm x 26 mm (5.7 inch x 4.1 inch x 1.0 inch)
Power	100 ~ 240VAC, 50/60 Hz (power pack included)
DC Input (from power pack)	7.5 VDC (3.9 watts)

Ordering Information:

Description	Part Number
5-port Switch with Multimode, SC	VS-105FC
5-port Switch with Multimode, ST	VS-105FT
5-port Switch with Multimode, MT-RJ	VS-105FJ
5-port Switch with Multimode, LC	VS-105FL
5-port Switch with Single-mode, SC, 20 km	VS-105FS20
5-port Switch with Single-mode, SC, 40 km	VS-105FS40